

Woodlyn

5-7 Bedroom / 3.5-5.5 Bathroom / 3-5 Car Garage / 2,864 ft.²

The Woodlyn embodies the pinnacle of open-concept living, melding style, space, and functionality into an impressive residential blueprint. At the heart of this plan, you'll find an expansive family room flowing seamlessly into a spacious dining and kitchen area, reflecting the essence of an inclusive, modern-day living experience.

Floor Layout Options:

- 5 Car Garage w Door To Yard
- Multi-Gen Suite
- Unfinished Basement
- Finished Basement
- Add Door From Garage To Yard
- Expanded Garage - Rear Door 8' x 8'

Upgrade Options:

- 10 Interior Packages to Coose From
- 4 Fireplace Options to Choose From
- A/C
- Laundry Upgrade - Sink & Cabinets
- Window Coverings Throughout
- BBQ Gas Stub To Rearyard
- Fireplace 1
- Fireplace 2
- Electric Upgrade 1
 - Solar Conduit to Roof & EV Pre-Wire
- Electric Upgrade 2
 - Electrical panel upgrade, holiday lights, can lights, undercabinet lights, and more
- Finish Upgrade
- 7 Kitchen Appliance Packages to Choose From
- Rear Covered Patio



PRAIRIE W/ 5 CAR & MULTI-GEN SUITE



CRAFTSMAN W/ 5 CAR GARAGE



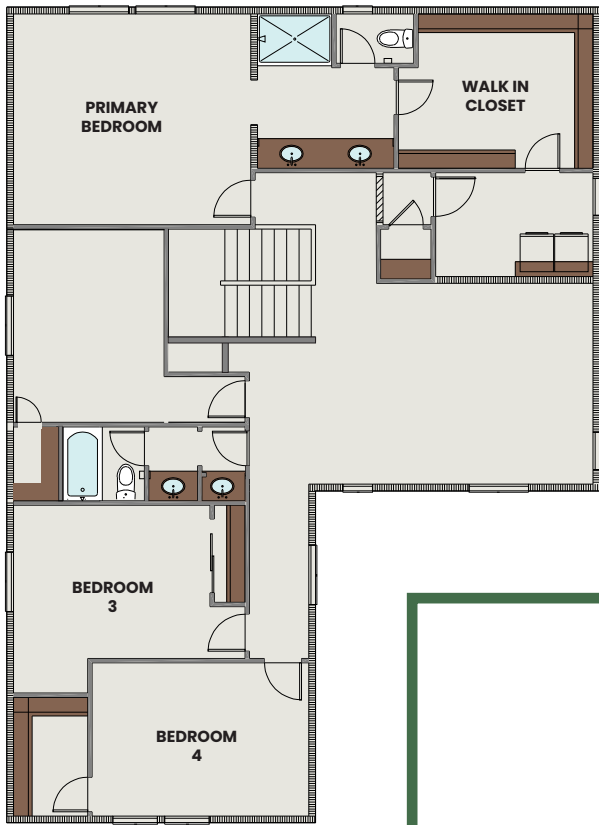
LEARN MORE
ABOUT THE WOODLYN



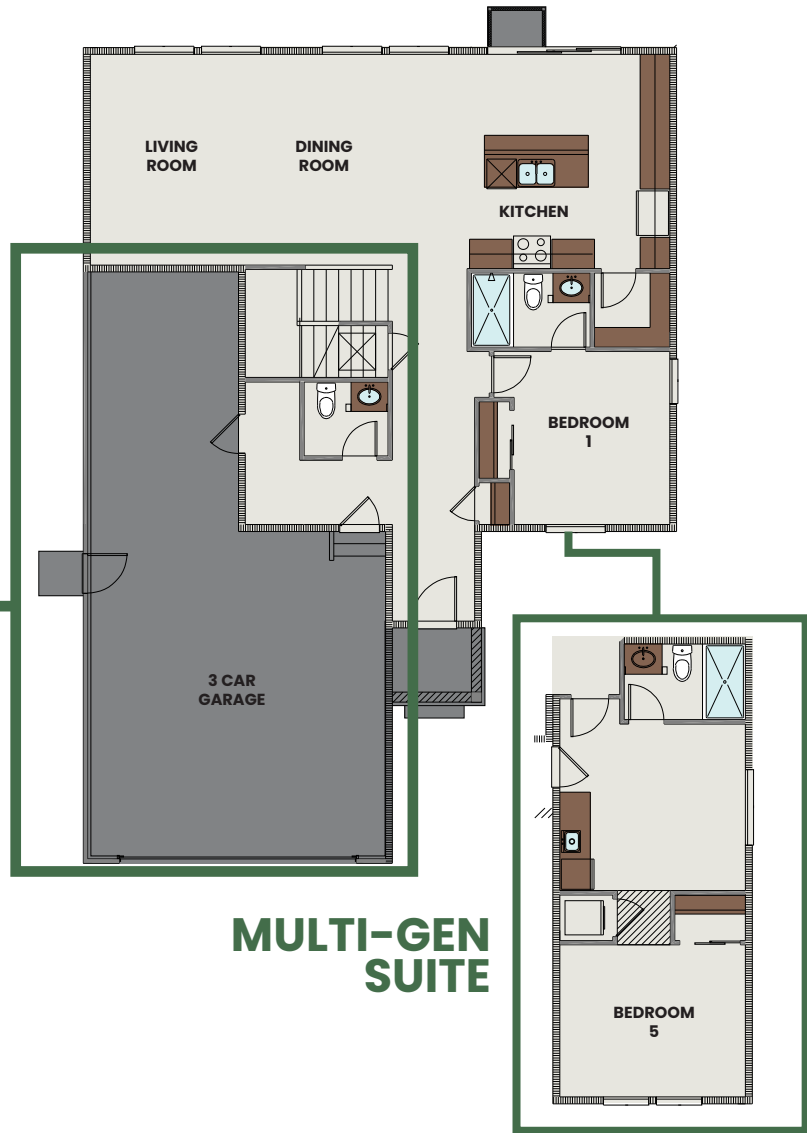
**CONTACT
US TODAY!**
(719) 800-9822

SALES@MAYBERRYCOLORADOSPRINGS.COM
WWW.MAYBERRY-COLORADO.COM

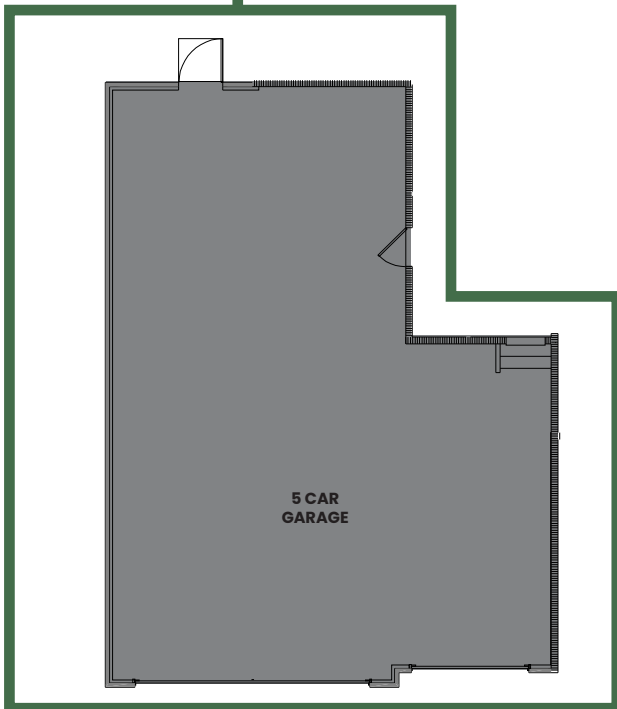
SECOND FLOOR



FIRST FLOOR



MULTI-GEN SUITE



OPTIONAL FINISHED BASEMENT

