

Beacon

3-4 Bedroom / 2.5 Bathroom/ 2 Car Garage / 1,564 ft.²

Welcome to this exceptional entry-level new construction home, offering a perfect balance of comfort, affordability, and convenience. With 3 or 4 bedrooms, 2.5 bathrooms, and a 2-car garage, this thoughtfully designed floor plan provides an ideal space for families and individuals alike.

Floor Layout Options:

- Add A 4th Bedroom / Remove Loft

Upgrade Options:

- 10 Interior Packages to Choose From
- 2 Exterior Elevations to Choose From
- 4 Fireplace Options to Choose From
- A/C
- Window Coverings Throughout
- BBQ Gas Stub to Rearyard
- Metal & Trex Deck 12'x20'
- Electric Upgrade 1
- Finish Upgrades
- 7 Kitchen Appliance Packages to choose From

LEARN MORE
ABOUT THE BEACON



**CONTACT
US TODAY!**
(719) 800-9822

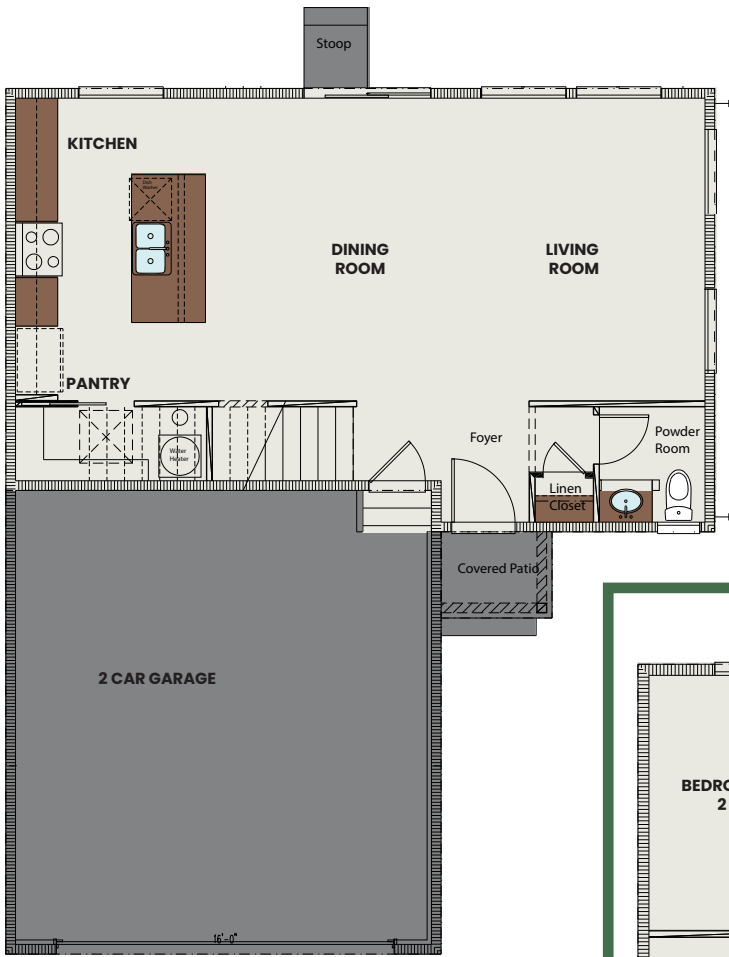
SALES@MAYBERRYCOLORADOSPRINGS.COM
WWW.MAYBERRY-COLORADO.COM

FARMHOUSE



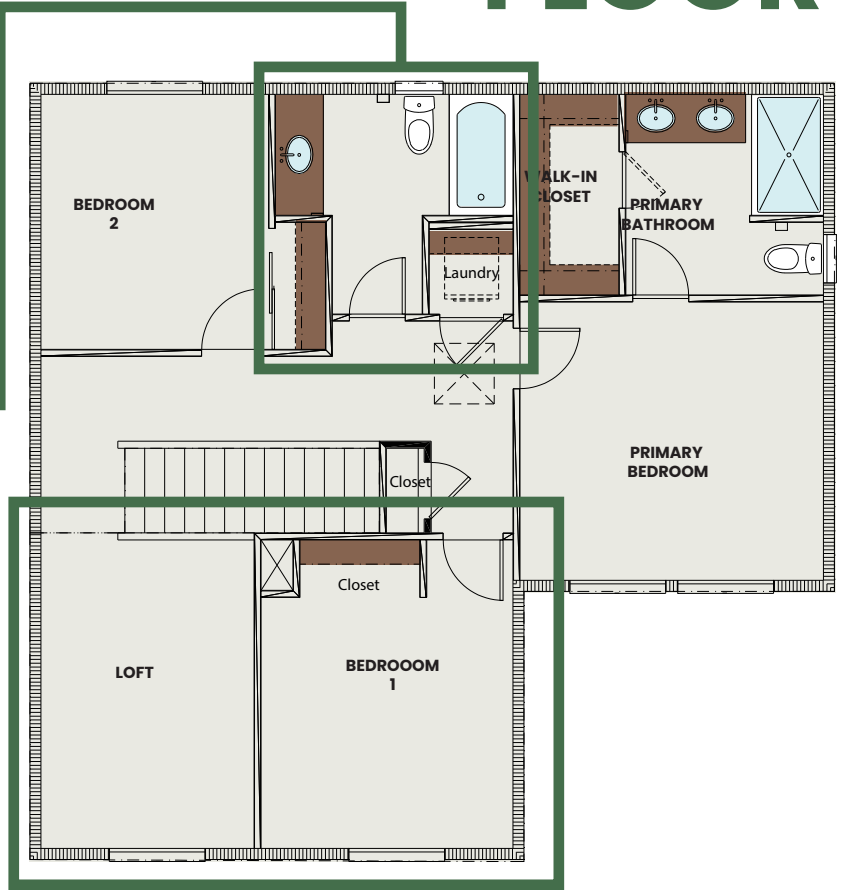
MODERN



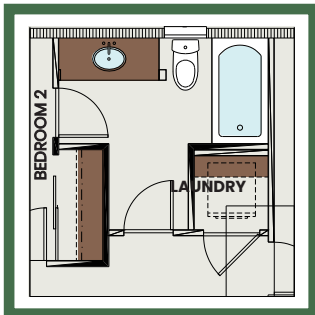


FIRST FLOOR

SECOND FLOOR



OPTIONAL DOOR TO BEDROOM 2



OPTIONAL 4TH BEDROOM

