

Bristol

4-6 Bedroom / 3-5 Bathroom / 3 Car Garage / 2,227 ft.²

Introducing the Bristol, a captivating expression of modern elegance fused with thoughtful functionality. This exceptional floor plan boasts four bedrooms, three bathrooms, and a three-car garage, offering ample space for your family's comfort and convenience.

Floor Layout Options:

- Unfinished Basement (367 Sq. Ft.)
- Finished Basement (1,714 Sq. Ft.)

Upgrade Options:

- 10 Interior Packages to Choose From
- 4 Fireplace Options to Choose From
- A/C
- Laundry Upgrade - Sink & Cabinets
- Window Coverings Throughout
- BBQ Gas Stub To Rearyard
- Metal & Trex Deck 12' x 20'
- BBQ Gas Stub To Rearyard
- Electric Upgrade 1
 - Solar Conduit to Roof & EV Pre-Wire
- Electric Upgrade 2
 - Electrical panel upgrade, holiday lights, can lights, undercabinet lights, and more
- Finish Upgrade
- 7 Kitchen Appliance Packages to choose from



FARMHOUSE



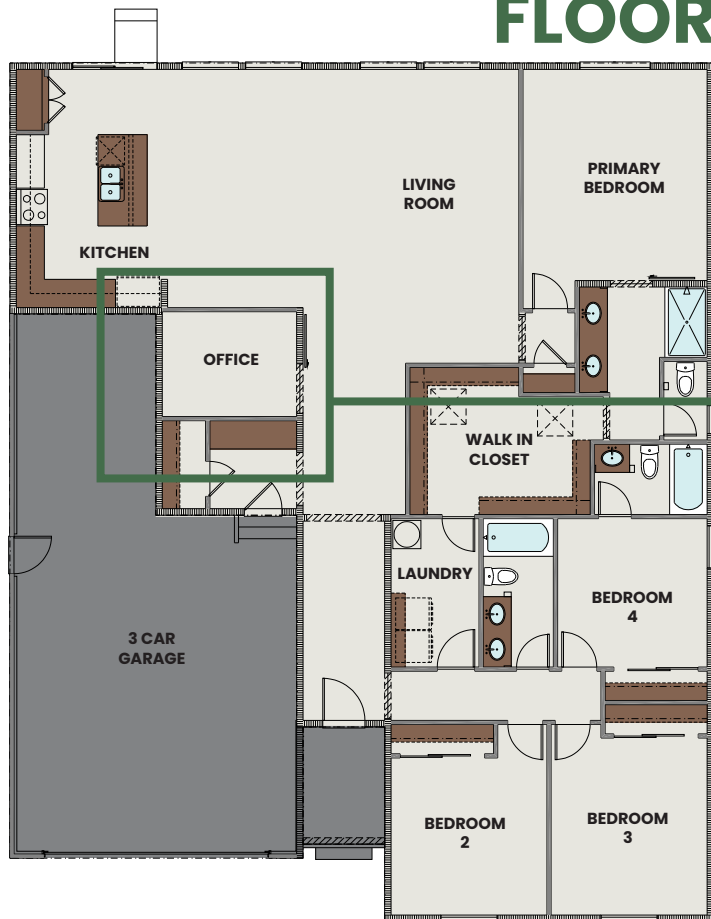
LEARN MORE
ABOUT THE BRISTOL



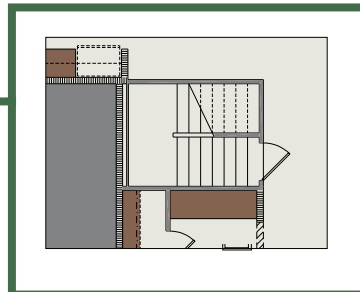
**CONTACT
US TODAY!**
(719) 800-9822

SALES@MAYBERRYCOLORADOSPRINGS.COM
WWW.MAYBERRY-COLORADO.COM

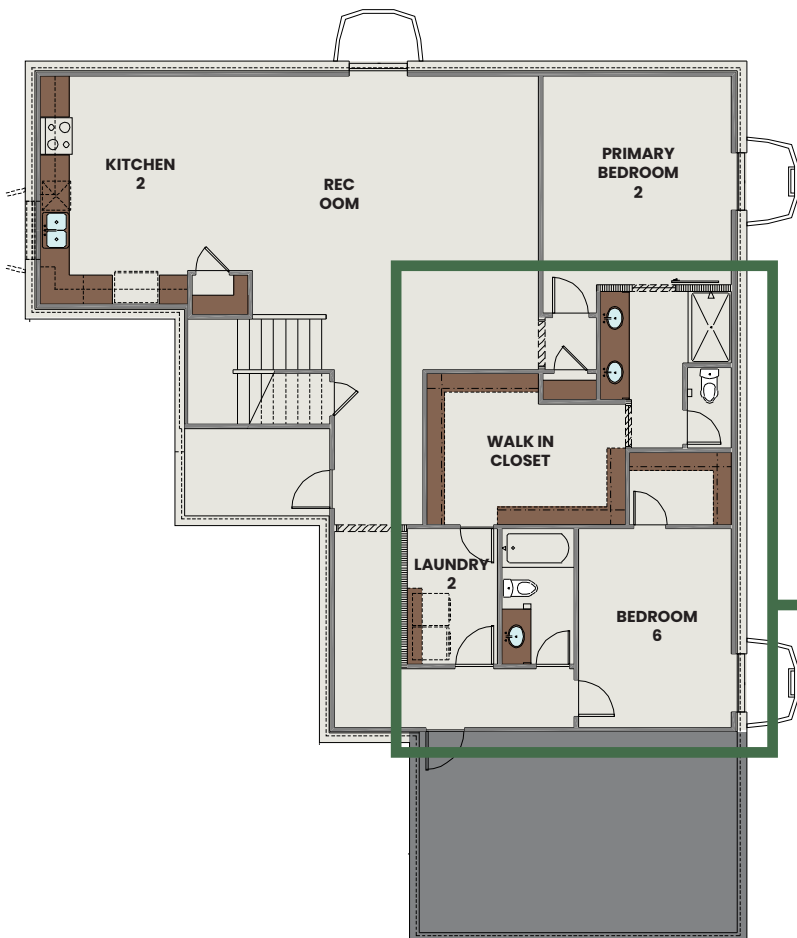
FIRST FLOOR



STAIRS TO BASEMENT



OPTIONAL FINISHED BASEMENT



OPTIONAL BASEMENT BATHROOM

